



Mayra 50

TIMELESS SAILING. MODERN COMFORT.

Mayra 50 is a sophisticated classic sailing ketch designed for modern owners who love to indulge in the romance of sailing, while still enjoying all the comforts associated with modern yachting. Built with a technologically advanced wood hull, Mayra 50 not only offers exceptional performance but also stands as an eco-friendly choice, thanks to the use of laminated wood that minimizes environmental impact without compromising strength or durability. With a meticulously planned layout, it features an expansive owner's cabin on the lower deck aft for ultimate privacy and relaxation. Guest accommodations include five elegantly appointed cabins, totaling the yacht's capacity to 13 guests; a big plus for owners interested in chartering their yacht. The crew quarters are strategically located in the bow, enabling efficient service and operations.

Mayra 50



Mayra 50



MAIN SPEC

Mayra 50



Length overall:	50.15 m
Breadth over all:	8.72 m
Draught maximum:	3.6 m
Displacement @ Full Load:	250 t
Material:	Wood Epoxy
Tonnage:	272 GT

Max speed:	15 knots
Cruising Speed:	13 knots

Main engines: 2x MAN D2676 LE428, 441 kW, IMO Tier III (SCR filters)

Generators: 2x 55 kW, Kohler

Fuel:	13,862 l
Fresh water:	5,730 l

Guests:	13 in 6 cabins
Crew	7 in 4 cabins

Sails:	Main sail 260 m ²
	Mizzen sail 191 m ²
	Genoa 371 m ²
	Stau sail 118 m ²
	Total sail area 896 m ²
	Gennaker 850 m ²

Class: TÜRK LOYDU 1A5 UN SAILING YACHT (+) M

Naval Architecture:	Karatas Yacht Design
Exterior Design:	Studio Scanu
Interior Design:	TBD

Mayra 50



OYSTER WHITE

Mayra 50

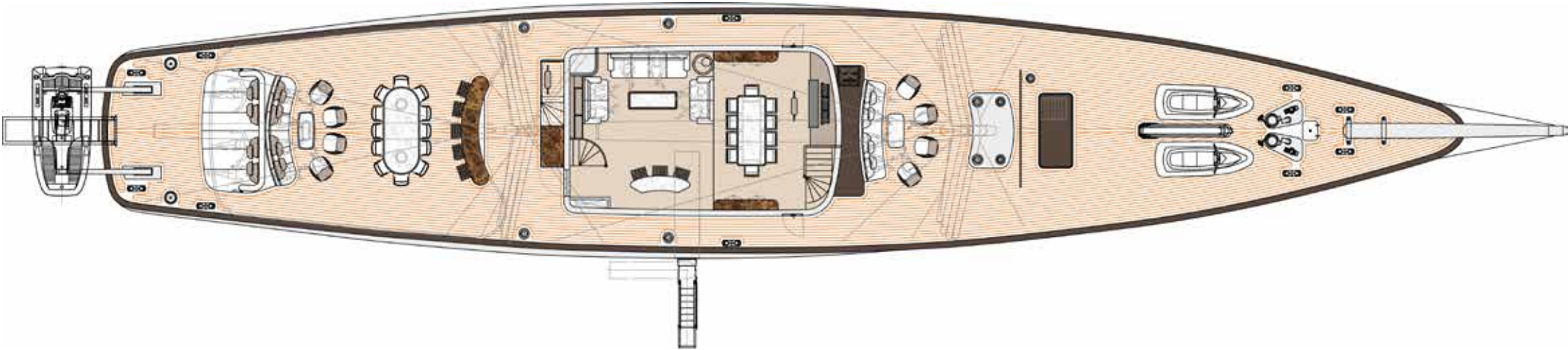


MAJESTIC BLUE

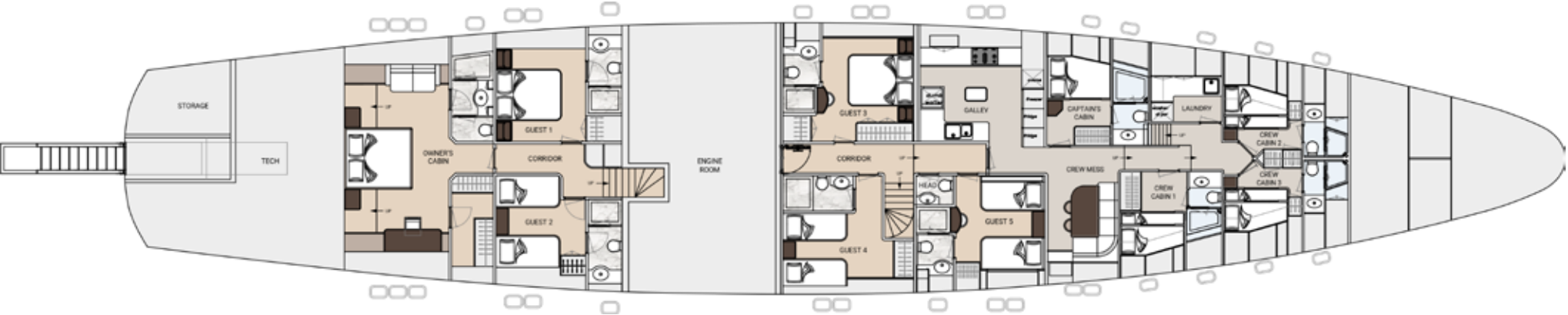
DECK PLANS

Mayra 50

Main deck



Lower deck



Mayra 50



Mayra 50



Mayra 50



IN-BUILD 50-METER SAILING SUPER YACHT

Availability & Customization Options

Mayra 50 is available for purchase in Antalya Free Zone, Turkie in its current condition **with delivery in 14 months**. Customization options still open for select areas. Prospective owners have the opportunity to tailor the following items:

- Hull/superstructure exterior colour scheme (including metallics);
- Interior soft finishes;
- Loose furniture (interior & exterior);
- Lights;
- Carpets;
- Marbles;
- Parquet.

Key construction milestones achieved so far:

- Hull construction is 90% complete.
- Main engines delivered to the shipyard.

Full interior construction, teak and stainless steel works are done in-house, allowing high quality and minimal delay risks.



Mayra 50



Mayra 50



Mayra 50

